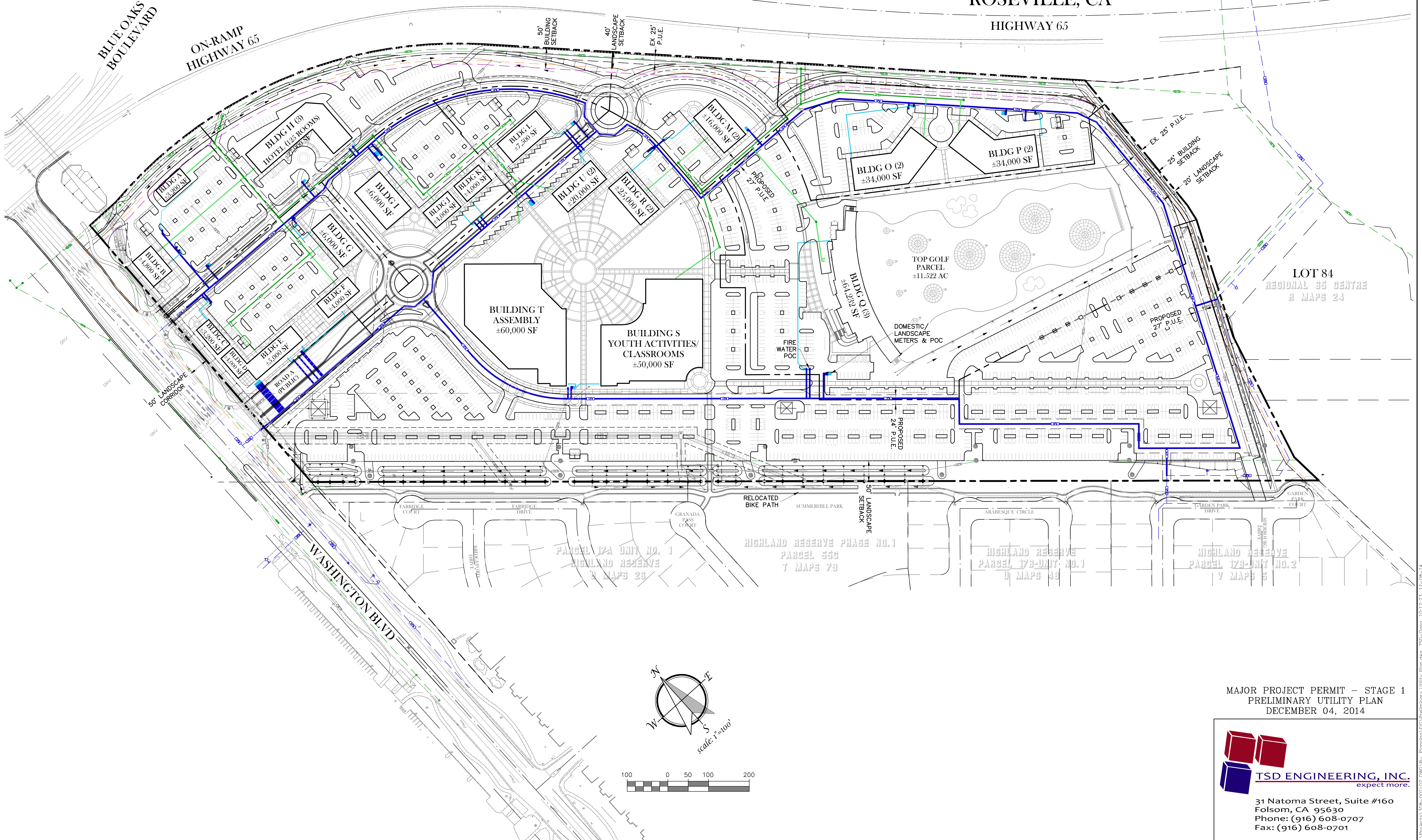


PRELIMINARY UTILITY PLAN
NCRSP - PARCEL 49
 MAJOR PROJECT PERMIT - STAGE 1
 ROSEVILLE, CA



MAJOR PROJECT PERMIT - STAGE 1
 PRELIMINARY UTILITY PLAN
 DECEMBER 04, 2014

TSD ENGINEERING, INC.
 expect more.

31 Natoma Street, Suite #160
 Folsom, CA 95630
 Phone: (916) 608-0707
 Fax: (916) 608-0701

P:\Projects\038-001\02 DWG\8- Planning\GIS\Preliminary Utility Plan.dwg, TSD-Dims, 10:17:23, 12-08-14